



Forum in Focus

FALL 2008

President's Letter

Dear Forum Members:

Curing cancer, fighting infectious diseases, finding vaccines for harmful viruses, understanding links between human DNA and many medical conditions . . . these are just a few examples of the important work of the Southwest Foundation for Biomedical Research (SFBR).

The Southwest Foundation Forum's role is *vital* to SFBR. We provide grants that serve as launchpads to many of SFBR's 85 scientists. Our fundraising efforts are mainly focused on one annual gala which has become a wildly popular spring-time event in San Antonio. The 2008 Beyond the Sea Gala, chaired by the talented duo **Anne Johnston** and **Anne Heaner** and assistant **Kim Shepperd**, brought in \$229,000! This will provide over **six** \$35,000 grants for SFBR scientists. In the past 8 years, SFBR researchers funded by the Forum have qualified for more than \$16 million worth of additional grants to fund their pilot studies.

But the Forum has many other roles besides fundraising! We have been an active member of the science community as well. Each year, Forum members serve as ambassadors to educate the San Antonio community about the exemplary research of SFBR. We also sponsor tours of SFBR and offer monetary awards (in conjunction with the V. H. McNutt and L. D. Ormsby Foundations) to local advanced placement science classes.



Laura Moorman

In May, when I officially took the gavel from outgoing President, **Allison Zeller**, I told the roomful of new, retiring and returning Board Members that I was extremely honored that this group of highly educated and prominent women were going to allow me to attempt to follow in her successful footsteps. Allison improved the Forum in many ways during her tenure and will continue to contribute as Chairman of the Nominating Committee.

I'm very happy to announce that the Board has been blessed to not lose any Board members to the unfortunate AT&T move to Dallas! Our 2008-2009 Board is as strong as ever, and I'm thrilled to work with each of them.

Although we have no Board meetings during the summer months, several board members have been hard at work! Many thanks to our talented and creative newsletter chairpersons, **Cathryn Le Vrier** and **Leanne Kelly** for getting this newsletter out in time to promote our first big event, **Ladies' Night Out at Julian Gold on September 25, 2008**. **Amy White** and **Kristin LeVoyer** will co-chair the event, and keep us up to date on Fall Fashions while raising money for the Forum. Our deepest thanks go to Julian Gold, a multi-year sponsor of this fundraising event and also our official sponsor for the generous favors for the 2008 Gala. Please plan to attend this fun and fashionable event and bring all your friends!

The 2009 Forum Gala, *Out of Africa*, is sure to be a smashing success with Chair **Karen Lee Zachry**, Co-Chair **Suzanne M. Dabbous, MD**, co-assistants

The purpose of the Southwest Foundation Forum is to support the Southwest Foundation for Biomedical Research through community relations, volunteer service and fundraising.

(Continued on Page 2)

President's Letter

(Continued from Page 1)

Kimberly Archer and **Paola Lloyd**, and Gala Treasurer **Anne Heaner** leading the way. They have filled all of their committee chairs but it is not too late if you want to volunteer to help make this another night to remember. If you haven't received your 2008-2009 Membership Directory already, it will be coming soon thanks to the dedication of **Debra Ferguson** and **Shari Stankey**. **Josie Fleisher**, our Database Coordinator, played a key role to ensure every member's information was up to date. Our 4th Vice President, Membership, **Mary Beth Mosbacher**, was also key in renewing memberships and keeping Josie up to date.

Our 1st Vice President, **Terry Gouger**, has been contacting potential speakers for our very popular Lecture Luncheons. Be sure to mark your calendars now for two very interesting topics and delicious Argyle food on **November 19th, 2008** and **March 25th, 2009**. **Michele Stevens**, Terry's Luncheon Assistant, is sure to dazzle us with beautiful centerpieces and make the events go smoothly.

We are lucky to have **Dana Hamilton** continue with her position from last term as Website Liaison. The website is always current thanks to her diligence and big kudos to Dana for getting the Gala on-line! Please visit our website at www.swff.org the next time you are near your computer. You will be impressed as users may pay Membership dues, book Lecture Luncheon seats, and now pay for Gala seats/raffle tickets/tokens/etc. on-line!

Lynn Berryman closed the books on her term as Treasurer, while helping to transition **Jodi Wood** from Gala Treasurer to Forum Treasurer. This is an enormous summer job that often goes unrecognized. Lynn and Jodi met with SFBR CFO Jeannie Frazier this summer to coordinate efforts to ensure a smoother tax return preparation. SFBR generously offered to fund two laptops for our two Treasurers that will maintain all financial data and aide in transitions.

I'm very proud of our "Science Gals"! **Mary Herff** and **Roxana Newsom** will be heading the Student Tours of SFBR and **Sally Sullivan** and **Carol Oliver** will take over the Science Education Awards. This foursome met this summer to discuss coordinating efforts and improving these already successful community service projects.

Meredith Campbell, this year's archivist, has already sorted through everything in our storage unit and cleaned out, organized, and electronically documented everything in there.

You cannot miss this year's Foundation Evening Tour! **Audrey Mangold** and **Courtney Percy** will coordinate the Foundation Evening Tour on October 29th, 2008, and you will have a chance to meet SFBR's new President, **Kenneth Trevitt**. He will give opening remarks after a cocktail buffet and then small groups will tour the facilities and SFBR scientists will answer questions. Please plan to come and be sure to invite potential members!

We are fortunate to have **Courtney Burkholder** continue to serve as Public Relations Chair. Her outstanding work last term got the Forum covered in all the local media.

Julie Zacher, Recording Secretary, will record the minutes of our meetings and track attendance. **Catherine Comeaux**, Corresponding Secretary, will graciously handle all of our Forum correspondence. **Heather Kraft** will oversee our meetings as Parliamentarian. **Kim Shepperd** will compile all of our information at the end of the year as Historian. **Shannon Wingrove** and **Jenni Curren** will help Kim document the 2008-2009 year as our Forum Photographers.

Dottie Cooper will oversee our volunteer efforts and **Julie Dudley** will coordinate our Mailing and Phone needs this year.

My trusted advisors this year include my talented mother-in-law, **Nancy Moorman**, and three Past Presidents of the Forum, **Kathryn Dehlinger**, **Lisa Sechler** and **Jane McFarlane**. Who better to seek advice from?

I am grateful to all of the Board's contributions and am looking forward to the challenges and opportunities that are ahead. I'm confident that I have the most talented group of people to help me with them!

Sincerely,



Laura Moorman
President 2008-2009
Southwest Foundation Forum



There's nothing more hip than supporting a good cause!



Southwest Foundation Forum Ladies' Night Out

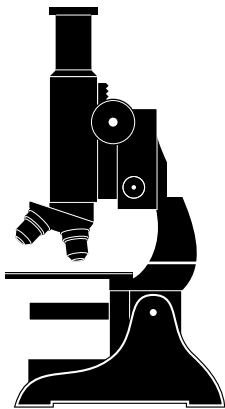
Thursday, Sept. 25th, 5:30 - 8:00 pm
at Julian Gold

- Catering by Los Barrios
- Book signing by Diana Barrios Trevino
- Door Prizes • Cocktails
- Dian Malouf trunk show with all of her latest unique designs

Julian Gold

10% of total sales
benefits the
Southwest Foundation
Forum





SCIENCE EDUCATION AWARDS UPDATE

Each year, for the past 15 years the Southwest Foundation Forum, in conjunction with the VH McNutt Memorial Foundation, holds a competition for grants to award to area high schools for their school science department's program.

The awards are made on a competitive basis, to high schools demonstrating the strongest commitment to further the development of innovative and progressive science education programs. The aim is to assist in the purchase of teaching materials for a science program. Both public and private high schools are eligible.

The winners are determined by a panel consisting of Scientists from The Southwest Foundation for Biomedical Research, Valerie Guenther, trustee for the VH McNutt Foundation and two Forum members. We'd like to thank Valerie and our Foundation Scientists for their time and direction in this process, as we certainly couldn't do it without their input!

Dr. Harold Goring

Dr. Andrew Hayhurst

Dr. Elizabeth (Helen) Schwelger

The 2007 winners were:

First Place:

Medina Valley High School
(1st win, 1st for teacher)
Tanner Lange, Science
Teacher:
Aeroscience Studies

Second Place:

Harlandale High School
(2nd win, 2nd for teacher)
Mario Gamboa, Biology
Teacher:
*Using Biochemistry to
Establish and Improve
AP Biology*

Third Place:

Samuel Clemens
High School (5th win, 3rd for
teacher)
Ronnie Kirchhof, Science
Teacher:
*Aquaponics:
Can Aquaculture and
Hydroponics Coexist in a
Closed System?*

Fourth Place:

East Central High School (3rd
win, 1st for teacher)
Heidi Zertuche, Biology
Teacher:
*Environmental Science
(Pond Ecosystem)*

Fifth Place:

San Antonio Christian High
School (1st win, 1st for teacher)
Deborah Baker, Anatomy and
Biology Teacher:
C.S.I. Lab Materials

Honorable Mention:

George W. Brackenridge
High School (4th win, 4th for
teacher)
Jennifer Bessonette,
Teacher/Science Dept. Chair:
*You Are What You Eat: A
Study of the Structure
and Function of
Biomolecules*

SFBR Foundation Updates

NEW PRESIDENT JOINS SFBR

The ladies of the Southwest Foundation Forum join SFBR faculty, staff and trustees in welcoming Kenneth Trevett as the Foundation's new president. He officially assumes his new leadership role at the end of September, succeeding John C. Kerr, a trustee and former SFBR chairman who has served as interim president of SFBR since June of 2006.



Trevett, an attorney, comes to the position with 26 years of senior management experience at independent research institutes such as SFBR, including his most re-

cent position as president and CEO of Los Angeles Biomedical Research Institute at Harbor-UCLA Medical Center ("LA BioMed"), one of the largest independent biomedical research organizations in California. Previously he served as a senior administrator and legal counsel for The Schepens Eye Research Institute in Boston, an affiliate of Harvard Medical School; the Dana-Farber Cancer Institute in Boston; and The Jackson Laboratory in Bar Harbor, Maine.

SFBR Chairman J. R. Hurd believes Trevett is well suited for his leadership position at the Foundation. "We are very pleased to have someone of Ken Trevett's caliber take the helm at SFBR," he said. "His appointment is the culmination of an extensive national search that included numerous highly qualified candidates from across the country, resulting in the selection of a truly outstanding new chief executive for SFBR."

Hurd continued, "With Ken Trevett's high-level management experience at several of the leading independent biomedical research organizations in this country – especially when coupled with his legal background and his experience in philanthropic

fundraising and the commercialization of research discoveries – he is exceptionally well qualified to lead the Foundation to even higher levels of achievement."

Kerr, who will continue as a member of SFBR's Board of Trustees, also is enthusiastic about the Foundation's new chief executive. "I am delighted to welcome Ken Trevett as the Foundation's new president," he said. "With his proven leadership ability at several of the nation's preeminent research institutions, he is an ideal fit for SFBR. I look forward to a close working relationship with him in my continuing role as a trustee."

Among his many accomplishments at LA BioMed, Trevett is credited with creating a more collaborative



environment, developing a sophisticated technology transfer program for the commercialization of promising technology in the patient care arena, leading the

organization through a campus modernization effort, attracting additional revenues to the institution, and increasing awareness of the organization within the greater Los Angeles area. Now he said he is looking forward to using his skills for the further enhancement of SFBR.

"The opportunity to serve as president of one of the finest biomedical research organizations in the

(Continued on next page)

Updates continued . . .

country is an honor that is tremendously exciting for me,” Trevett said. “The Southwest Foundation is in an extraordinary position, with excellent scientific leadership, outstanding faculty with a strong track record of research success, an incredible Board of Trustees, significant resources, and a staff that is fully committed to the international mission of the organization. I believe it will be enjoyable and challenging to build on the organization’s great tradition of research productivity as we strive for even greater impact worldwide.” Hurd pointed out that Trevett is joining SFBR at a time when the organization is at its strongest position, both scientifically, in its 67-year history, and he thanked John Kerr for his dedication and service in guiding it toward success. “We owe John a debt of gratitude. He’s led the organization to a point where it is very well positioned, and now Ken Trevett can help us take it to the next phase.”

HAPPY RETIREMENT TO ANN REEKS

Heartfelt thanks and congratulations go out to Ann Lakey Reeks, who retired this past spring after nearly 40 years of service to SFBR and the Southwest Foundation Forum.

While her retirement is certainly deserved, her absence is deeply felt, because Ann was an integral part of both organizations. At SFBR, she served as the executive assistant to five presidents, including

Mr. Martin Goland, Dr. Duncan Wimpress, Dr. Frank Ledford, Dr. Anthony Infante, and most recently, Mr. John Kerr. In each of these new “seasons” in the Foundation’s history, Ann’s dedication to the organization, her depth of knowledge about the institution, and her professional skills very highly valued.

Ann’s role with the Southwest Foundation Forum was particularly special, as she served as the SFBR liaison to the organization from its very inception. She can probably recite the list of Forum presidents by memory, since she worked closely with each and every one of them, as well as with the various members of each Forum Board, as they planned special events and activities in support of SFBR. Beginning with the Forum’s first leaders, who developed the idea for a new volunteer organization and worked to make it successful, and through the years as others have built on that success, Ann’s guidance and assistance have been essential.

A native of England, Ann had a previous professional career as a ballerina and at one time ran her own dance studio. Many believe that helps explain why she was able to carry out her responsibilities on behalf of SFBR and the Forum with such charm and grace. Now she is using her abilities – and her recently acquired degree in interior design – to develop her own business, while being sure to make time to “go on holiday” to visit her family in

dear old England. She also remains a member of the Southwest Foundation Forum and promises to see us at upcoming events.

**Congratulations, Ann!
We wish you all the best.**

(More Updates Page 7)

Volunteers Needed!

The Forum needs volunteers to help with the Fall Lecture Luncheon, Student Tours and Gala. If you are interested in volunteering for one of these events, please contact Dottie Cooper at 882-8525 or dhcooper@sbcglobal.net.

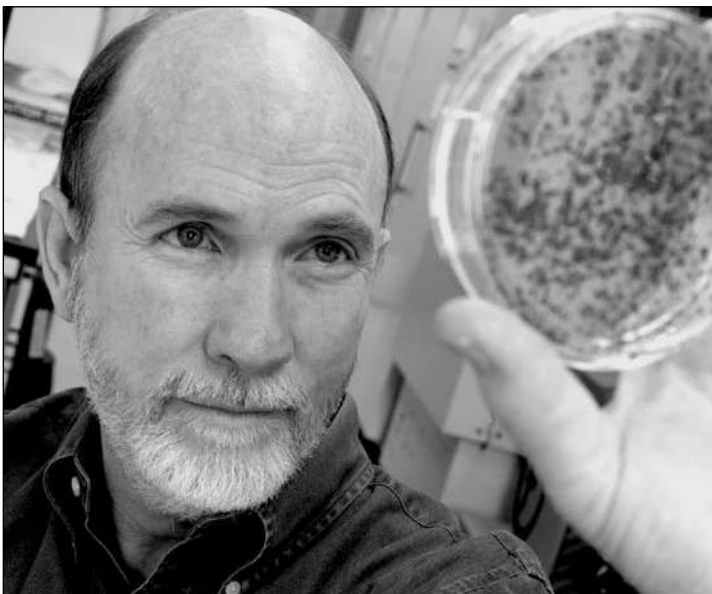
Fall Lecture Luncheon:

**Coming Nov. 19th
11:00 a.m.
The Argyle**

Our lecture luncheons are often sold out, so please book your seats/tables early. Members will receive an invitation in the mail in early October. We look forward to seeing you and your friends (invite a potential new member!) in November.

Scientists make progress in fight against leading cause of liver cancer

When you hear the word “hepatitis,” you don’t necessarily



think of cancer, but hepatitis B and C are the most common causes of liver cancer in the United States. And while deaths from cancer of all causes decreased 1.1 percent per year between 1993 and 2002 in the United States, death rates from primary liver cancer have been on the rise. SFBR scientist Dr. Robert Lanford hopes that some of his research can help reverse that trend, and he has good reason for those hopes.

Among other projects, Dr. Lanford is the principal investigator of a National Institutes of Health grant examining the mechanism on viral clearance of hepatitis B virus in chimpanzees and the long-term effects of chronic infection with HBV. The study involves collaborators at the Fox Chase Cancer Center in

Philadelphia, the University of Adelaide in Australia, and the NIH. Together, they are performing the most detailed analysis of hepatitis B virus infections ever conducted in hopes of finding better approaches to treating chronic infections and possibly a better understanding of how this virus causes cancer.

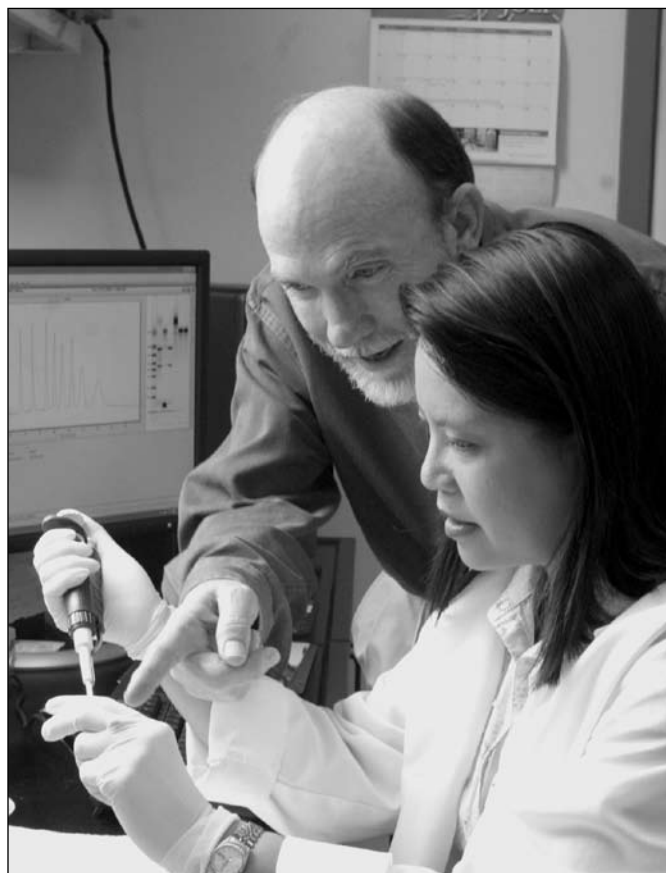
One of the key strengths of their studies is that they have developed the methods needed to fol-

low the fate of individual cells in the liver. They essentially found a way to identify a fingerprint that is unique for every cell, and by following those fingerprints, observed that some cells have a selective advantage. Rather than being killed off by a hepatitis B infection, they not only survive but continue to divide and replicate, often forming large clusters of identical new cells.

Dr. Lanford believes these large clusters set the stage for cancer to

develop, since they are susceptible to DNA damage from the oxidative environment in the liver caused by hepatitis B infection. He considers this discovery a major breakthrough, because every time you increase understanding of how cancer gets started, you increase the potential to find new cures.

In other studies with the hepatitis C virus, Dr. Lanford is looking for new methods to cure the infection. The best way to prevent liver cancer is by curing the infection before the cancer starts, just like stopping smoking is the best method to prevent lung cancer. Using the chimpanzee model of hepatitis C,



his research team is evaluating many of the new drugs being developed by pharmaceutical companies to treat hepatitis C infection.

(Continued on Page 8)

Updates continued . . .

Each year, his laboratory evaluates 5 to 10 drugs that, if successful in the chimpanzee model, will progress to human clinical trials. Five years ago, very few of these drugs showed good potency for inhibiting hepatitis C infection in the chimpanzee, but today, most of the drugs decrease the amount of virus in the blood by 10,000-fold in just a few days. The problem is that the virus becomes resistant to any single drug used alone, so the trick is to develop a cocktail of inhibitors that uses multiple approaches to corner the virus. This is the same philosophy used today in combating HIV infections. The difference is that, although HIV can only be treated and kept under control, a good multi-drug cocktail could actually cure most hepatitis C infections. And if you can cure hepatitis C, you can prevent the cancer it often causes.



DR. REBECA RICO-HESE TO REPORT DENGUE RESEARCH SUCCESS AT INTERNATIONAL CONFERENCE

For years, Dr. Rebeca Rico-Hesse has kept her eye on dengue, a mosquito-borne virus that in its mild form causes severe flu-like symptoms and in its severest form causes hemorrhagic fever. Through a variety of epidemiological studies and laboratory investigations, she has tracked the spread of this disease around the globe as she also has tried to find ways to defeat it. Current therapies are limited to rest and the consumption of fluids, while prevention methods are limited to attempts to eradicate the type of mosquito that can carry dengue, or at least lessen people's exposure to it.

In the 1990s, she showed for the first time that the severe form of dengue can be contracted not only after infection with more than one of its milder strains, but also from a single infection with the more virulent strain. Therefore, when dengue hemorrhagic fever was diagnosed in the Texas border city of Brownsville in 2005, she and her research team were called upon to help determine the cause. Their investigation led to the genetic identification of the culpable virus and confirmed that the more virulent form of dengue is now being transmitted

along the Texas-Mexico border. In 2007, that unfortunate but major finding was published in what has quickly become a highly cited paper in the journal *Clinical Infectious Diseases*.

Dr. Rico-Hesse also is making continued advances in the effort to find effective anti-viral drugs or vaccines against dengue. In 2006, she published a paper on her success in developing the first animal model for dengue research: an immuno-suppressed mouse transplanted with human cord blood cells to give it a humanized immune system, enabling efficacy tests of anti-viral medications to treat dengue. In 2007, the Robert J. Kleberg Jr. and Helen C. Kleberg Foundation awarded a philanthropic grant to Dr. Rico-Hesse to further develop this valuable animal model so that it can be used for vaccine studies.

Because of her outstanding work, Dr. Rico-Hesse has been asked to co-chair a workshop at the National Institutes of Health to develop a plan to expand and obtain specific, broader funding for these research models. She also has been invited to chair a symposium and present research results at the Second International Conference on Dengue and Dengue Hemorrhagic Fever in Thailand in October 2008.

Beyond The Sea is Beyond Fabulous!

The 2008 gala "Beyond the Sea" was an amazing success, raising \$235,000 for the Southwest Foundation for Bio-medical Research. Chair **Anne Johnston**, Co-Chair **Anne Heaner** and Gala Assistant **Kim Shepperd**, selected by SWFF President **Allison Zeller**, were at the helm along with Honorary Chairs **Susan Kerr**, **Christi Moorman** and **Nancy Moorman**. This oceanic event was an evening full of great food, great friends and a great cause.



Over 130 dedicated volunteers worked tirelessly in advance to ensure the evening was a splash! **Karen Lee Zachry** and **Anita Allison** began raising money on the sale of tables eight months in advance. Their efforts literally paid off with a sellout event.

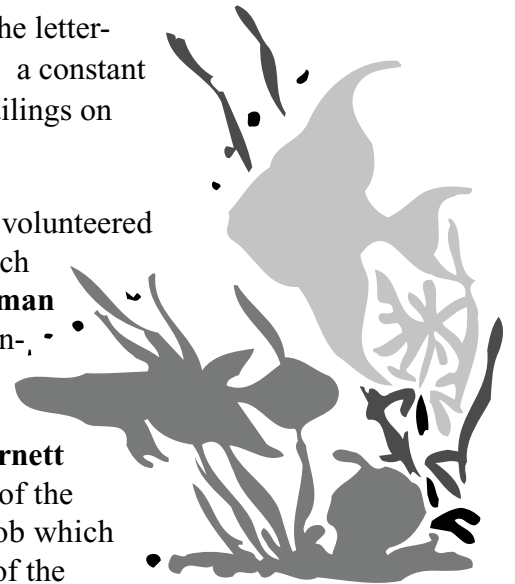
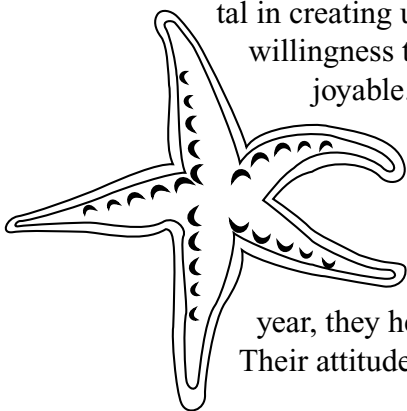
Catherine Comeaux and **Cathryn Le Vrier** were instrumental in raising additional funds with their superb grant raising skills. **Courtney Duphorne** and **Tracy Williams** went all over town collecting the most incredible raffle packages the gala has ever offered including a safari to Africa, compliments of **Ker & Downey**, **South African Airways** and **Oceana Beach and Wildlife Reserve**.

The creative talents of **Meredith Campbell** and **Paola Lloyd** designed the letterhead, invitations and programs which were elegant and understated . . . a constant theme of the party. **Debbie Duperier** and **Kimberly Archer** kept all mailings on track and sent them out in record time.

The party was beyond beautiful. **Melissa Morgan** and **Michele Stevens** volunteered their professional services to create a spectacular underwater setting which set the mood. **Danny Cuellar**, **Bryan Azar** and **Ilios Lighting**, **Fay Seeman** and **Aztec Rentals** and all of the staff at **Elegant Notions** were instrumental in creating unparalleled ambiance. Their patience and willingness to help made the process smooth and enjoyable. **Mary Beth Mosbacker** and **Melissa Barnett** were instrumental in coordinating all of the logistics of the party, a thankless job which they did with style and grace. The day of the party, **Picnikins** supplied lunch while volunteers put together an underwater sensation. Those volunteers included **all of the staff at The Argyle**. Every year, they help set up the party, work during the party, and then clean up after the party. Their attitude and dedication should be recognized as it is invaluable.

The creative talents of **Meredith Campbell** and **Paola Lloyd** designed the letterhead, invitations and programs which were elegant and understated . . . a constant theme of the party. **Debbie Duperier** and **Kimberly Archer** kept all mailings on track and sent them out in record time.

The party was beyond beautiful. **Melissa Morgan** and **Michele Stevens** volunteered their professional services to create a spectacular underwater setting which set the mood. **Danny Cuellar**, **Bryan Azar** and **Ilios Lighting**, **Fay Seeman** and **Aztec Rentals** and all of the staff at **Elegant Notions** were instrumental in creating unparalleled ambiance. Their patience and willingness to help made the process smooth and enjoyable. **Mary Beth Mosbacker** and **Melissa Barnett** were instrumental in coordinating all of the logistics of the party, a thankless job which they did with style and grace. The day of the party, **Picnikins** supplied lunch while volunteers put together an underwater sensation. Those volunteers included **all of the staff at The Argyle**. Every year, they help set up the party, work during the party, and then clean up after the party. Their attitude and dedication should be recognized as it is invaluable.



tal in creating unparalleled ambiance. Their patience and willingness to help made the process smooth and enjoyable. **Mary Beth Mosbacker** and **Melissa Barnett** were instrumental in coordinating all of the logistics of the party, a thankless job which they did with style and grace. The day of the party, **Picnikins** supplied lunch while volunteers put together an underwater sensation. Those volunteers included **all of the staff at The Argyle**. Every year, they help set up the party, work during the party, and then clean up after the party. Their attitude and dedication should be recognized as it is invaluable.

(Continued on Page 10)

Beyond Fabulous!

The weather was beyond perfect inviting guests to enjoy all areas of The Argyle. Upon arrival, cocktails and hors'derves were served on the beautifully manicured lawn while guests could peruse the raffle table or do a little pre-dinner gaming. Guests enjoyed dinner inside The Argyle as well as on the veranda. **Lynn Berryman** and **Kathryn Dehlinger** created an outstanding "sea" themed menu. Once seated, guests received generous Gift Cards from **Julian Gold** as well as a cookbook from Honorary Chair **Nancy Moorman**. **Shannon Wingrove** and **Julie Zacher** coordinated these incredible favors. Following dinner, dancing (a special thanks to **Nancy Barnes** and **Debbi Chesney** for arranging for the tunes of **London Calling**) and gaming ensued (thanks to **Casino Fun**).



Julie Dudley and **Amy White** arranged all of the gaming which was undeniably one of the highlights of the party. Gaming and dancing invited more guests to join the party thanks to **Jenni Curren** and **Suzanne Marco** who brought in record numbers to the After Party. **Laura Moorman** informed volunteers of gala related news. **Courtney Burkholder** informed SWFF members of the gala in the newsletter and publicized the event as one not to be missed. It was not missed by the media or our well equipped photographers, **Ashley Hixon** and **Kristin LeVoyer**. **Dana Hamilton** worked tirelessly to bring the gala into the technology age by offering Gala/After Party tickets, tokens and raffle tickets for sale online. **Jodi Wood** and **Leanne Kelly** kept the books in order as Treasurer and Co-Treasurer. **Terry Gouger**, **Jean Mitchell** and **Julie Zacher** were the gala's loyal advisors.

We are grateful for and overwhelmed by the support received for the 2008 gala.



Beyond Fabulous!



More photos page 13

Thank You to our Generous Donors to the 2008 “Beyond the Sea” Gala

Magnificent Oceans

Robert Tucker Hayes Foundation

Julian Gold

Splendid Seas

H-E-B

Silver Eagle Distributors, LP/

Bobbie and John Nau

Grand Gulfs

AT&T

Carol and Charles Foster

Mays Family Foundation

Christi and Tommy Moorman

Illustrious Lakes

Alamo Title Insurance

Merrill Lynch Private Bank – Nelson/Kepes Group

Argo Group US

Nancy and Jeff Moorman

Margery Block

Laura and Lew Moorman

Cox Smith Matthews Incorporated

NuStar Energy LP

Ernst & Young LLP

Raba Kistner Consultants, Inc.

Goldman Sachs/Whitney Solcher and Ed Hart

Pioneer Drilling/TETCO

Gunn Automotive Group

Valero

Karen and Tim Hixon

Zachry Construction Corporation

Majestic Rivers

Austin, Calvert & Flavin

Anne Wood Johnston

Azar/Dreeben/Gurwitz/McFarlane/Satel

Mr. and Mrs. John C. Kerr

C. H. Guenther & Son, Inc.

Mr. and Mrs. Judd Kraft

Cooper/Hamilton/Maynard/Roca/Sullivan

L.D. Ormsby Charitable Foundation, Inc.

Drs. Suzanne and Ash Dabbous

Audrey Mangold and Paul Bell

DPT Laboratories

Rosenberger Construction LP

Dudley/Duperier/Kelly/Morgan/Shepperd

St. Mary's University School of Law

Duphorne/Smith/Spielhagen/Weaver/Williams

South Texas Money Management, Ltd.

Friends of the Forum

Southwest Foundation for Biomedical Research

Frost Bank

Sterling Bank

Dr. and Mrs. Jay Gibson

Travis Commercial Real Estate

Harper/Kruger/McLiney/Stuart/White

UBS Wealth Management/

Anne and Marty Heaner and

Lloyd, Augustine, Anderson Group

Patt and Tom McCorkle

Mr. and Mrs. Thomas Wirth

Beuhler/Hetrick/Holloway/Schnoebelen/Simpson

Wortham Insurance and Risk Management

Jefferson Bank

The Zoch Family

(Continued on Page 13)

Beyond Fabulous . . .



Gala Grant Donors

Melany and Garrett Anderson
Dianne and Richard Azar
Stacy and Tyler Burke
Ann and Lon Carpenter
Orville Van Dorn Carr
Catherine and Craig Comeaux
Phyllis Cowell
Nancy Hanks Dewar
Josie and Clare Flesher
The Gorman Foundation
Terry and J.B. Gouger
Mrs. Helen K. Groves
Emory Hamilton
Michelle Harden, M.D.
Brian W. Harle, M.D.
Claudia Huntington and Marshall Miller
Kopplow Construction Company, Inc.
Paula R. Larson, M.D.
Cathryn and Bryan Le Vrier
Audrey Mangold
Zelime Matthews
in honor of Dianne and Richard Azar

Dean and Martha McCracken
Joe R. McFarlane, M.D.
Vicki and John McLaughlin
Dr. and Mrs. George E. Mimari
Jean and Joe Mitchell
Laura and Lew Moorman
Mrs. Earl Slick
Shari and John Stankey
Drs. Allison and Eric Stocker
Ruth Eilene Butler Sullivan
Tower Life Insurance Company
Drs. Alice and Sergio Viroslav
Laurie and John White
Shannon and Craig Wingrove
Lori and Mark Wright
Julie and Peter Zacher
Karen Lee and David Zachry
Laura and John Zachry
Allison and Josh Zeller

Special Thanks

Barbara and Alan Dreeben
Ilios Lighting
Julian Gold

Ker & Downey
Nancy Moorman
Oceana Beach and Wildlife Reserve

Picnikins Gourmet Sandwiches
South African Airways
Trinity Flowers/Danny Cuellar

PAST PRESIDENT'S LETTER

Thank you all for making this another remarkable year in the distinguished history of the Southwest Foundation Forum. Through your gifts of time, talent, energy and money, we were able to excel in our mission of supporting Southwest Foundation for Biomedical Research through community relations, volunteer service and fundraising.

As I said when I received the gavel in May 2007, I could not and would not do this alone. And I haven't. Strong ladies like Brooke Connolly and other past Forum presidents cleared the path and made my road easier. A dedicated and creative Forum Board of Trustees planned and organized numerous events that drew record attendance. The sound advice of my advisors – Cari Hill, Kathryn Dehlinger, Lisa Sechler and Barbara Dreeben – kept us all on the right track. So did the support of Ann Lakey-Reeks, who recently retired after nearly 30 years of service to SFBR, including work as the liaison to the Forum since its inception. Last but certainly not least are the hundreds of Forum members and enthusiastic volunteers who make our organization what it is.

Thank you to all of you for what you've done for the Forum and for SFBR. Consider just a few of the things we accomplished in 2007-2008.

Our fundraising success has been on an upward trajectory for several years. In fact, the 2007 Gala chaired by Terry Gouger raised a record-setting \$267,500, allowing the Forum to fund 10 SFBR pilot studies in the areas of cardiovascular disease, malaria, osteoporosis,

prostate cancer, biodefense, and the genetic disease cystinosis.

The dynamic trio heading the 2008 "Beyond the Sea" Gala – Anne Johnston, chair; Anne Heaner, co-chair; and Kim Shepperd, gala assistant – gave us every indication that this would be another year to remember, and they and their numerous volunteer committee members did not disappoint. With out-standing attendance, a beautiful setting, fabulous music, great gaming and delicious cuisine, this year's gala is sure to be remembered not only as a fun-filled party, but also as a highly successful fundraiser to benefit extraordinary science, and ultimately, human health.

Anticipating more great galas ahead, as well as the benefits of a new higher level of Forum membership and the annual "girls night out" fundraiser at Julian Gold that have proved highly profitable, the Forum made two key decisions this year. To help offset the increasing cost of science and ensure that our Forum grants maintain their impact, we decided to increase the maximum amount of our individual pilot study grants to SFBR scientists from \$25,000 each to \$35,000 each. We also increased our prizes for the Science Education Awards to area high schools,

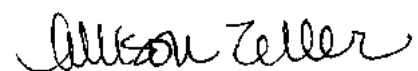
allowing more teachers to win bigger grants and, in the end, inspire more students.

Thanks go to the V.H. McNutt Memorial Foundation for joining us in our financial commitment to the Science Education Awards, which this year totaled \$20,000 divided among six area high schools to fund innovative science projects.

In between all this, we threw two highly successful lecture luncheons that drew record crowds, as well as an informative and enjoyable Evening Tour of SFBR for Forum members and guests. What a wonderful way to stay connected with our mission!

Thank you again to all of you for your support, your friendship, and your role in making 2007-2008 such a successful year. We can all be proud of the contributions we have made to Southwest Foundation for Biomedical Research.

They say that the best title in any organization is "Past President." While I can't imagine that's true in this case, I am about to find out. It is with great pleasure that I pass the gavel to my dear friend, Laura Moorman, Forum president 2008-2009. She has a habit of taking a position I just held and doing it even better, so I'm confident that you're in very good hands.



Allison Zeller
Past President
Southwest Foundation Forum



**SOUTHWEST FOUNDATION
FORUM
BOARD MEMBERS
2008-2009**

Officers

Laura Moorman
President

Terry Gouger
First Vice President

Karen Lee Zachry
Second Vice-President, Gala Chair

Suzanne M. Dabbons, M.D.
Third Vice-President, Gala Co-Chair

Marybeth Mosbacher
Fourth Vice-President, Membership

Jodi Wood
Treasurer

Anne Heaner
Assistant Treasurer

Julie Zacher
Recording Secretary

Catherine Comeaux
Corresponding Secretary

Allison Zeller
Past President/Nominating

Trustees

Kimberly Archer
Gala Assistant

Courtney Burkholder
Public Relations

Meredith Campbell
Archivist

Dottie Cooper
Volunteers

Jenni Curren
Photographer

Julie Dudley
Mailing/Phone

Deb Ferguson
Directory

Josie Flesher
Database Coordinator

Dana Hamilton
Website Liaison

Mary Herff
Foundation Student Tours

Leanne Kelly
Newsletter

Heather Kraft
Parliamentarian

Cathryn Le Vrier
Newsletter

Kristin LeVoyer
Special Events

Paola Lloyd
Gala Assistant

Audrey Mangold
Foundation Evening Tours

Roxana Newsom
Foundation Student Tours

Carol Oliver
Science Education Awards

Courtney Percy
Foundation Evening Tours

Kim Shepperd
Historian

Shari Stankey
Directory

Michele Stevens
Luncheon Assistant

Sally Sullivan
Science Education Awards

Amy White
Special Events

Shannon Wingrove
Photographer

Advisors

Kathryn Dehlinger

Jane McFarlane

Nancy Moorman

Lisa Sechler

Honorary Trustees

Ruth Bates

Graciela Cigarroa

Susan Kerr

Harriett Romo

Barbara Trevtt

SOUTHWEST FOUNDATION FORUM

P.O. Box 6648
San Antonio, Texas 78209

Non-Profit Org.
U.S. Postage
PAID
San Antonio, Texas
Permit No. 2193