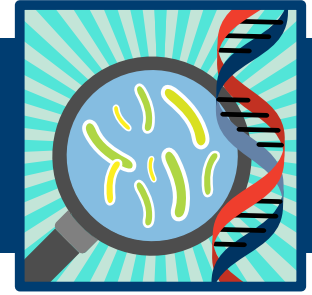


Student Directions

UNIT: TUBERCULOSIS

LESSON 2: IMMUNE SYSTEM ACTIVATE!

ACTIVITY 2B: RAISING THE BAR FOR GRAPH ANALYSIS!



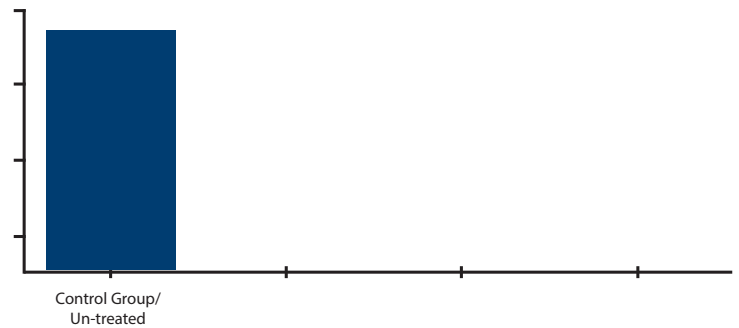
TEXAS BIOMEDICAL
RESEARCH INSTITUTE
HEALTH STARTS WITH SCIENCE



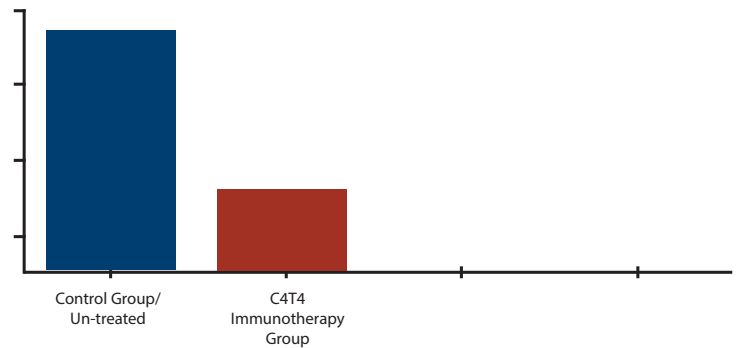
DIRECTIONS: Your teacher will share the presentation, *Slow Reveal Graph*. The graph is included in the transformed article, *Immune System Activate!* Each slide in the presentation has discussion questions, included below. Write your response to each discussion question in the space provided.

Presentation Discussion Questions

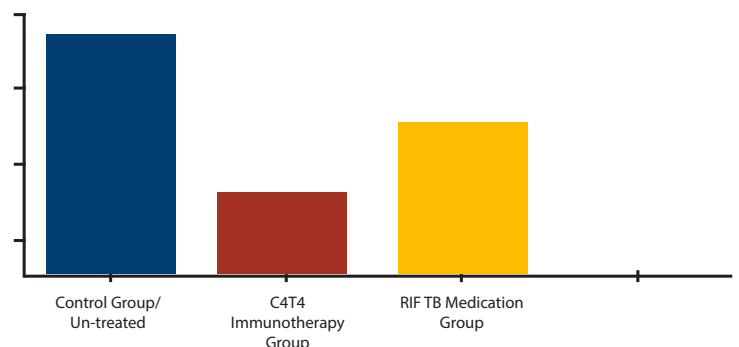
Slide 1: What do you see and wonder?



Slide 2: Compare the Control/Untreated group and the C4T4 Immunotherapy group and discuss what new changes have occurred.



Slide 3: Compare the Control/Untreated group and the RIF TB Medication group. Discuss what new changes have occurred.



MIDDLE & HIGH SCHOOL LEVEL

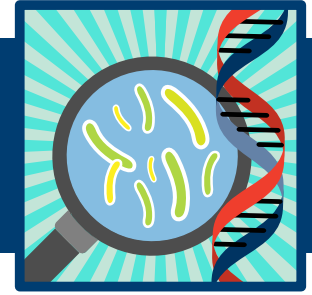
©2023 | Teacher Enrichment Initiatives (TEI) | NIH SEPA | [TxBiomed.org](https://www.txbiomed.org)
NIH SEPA Project #1R25GM142021-01A1

Student Directions

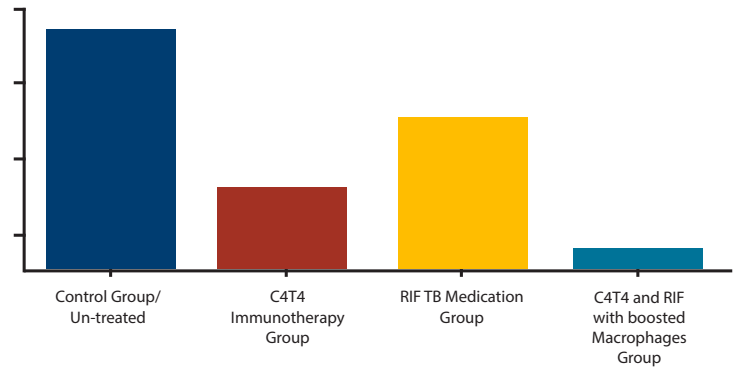
UNIT: TUBERCULOSIS

LESSON 2: IMMUNE SYSTEM ACTIVATE!

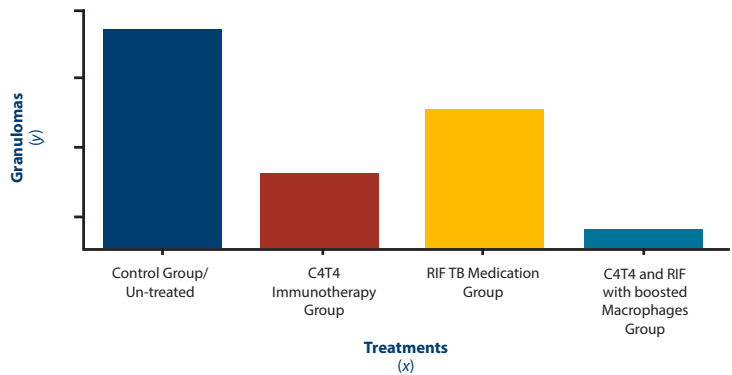
ACTIVITY 2B: RAISING THE BAR FOR GRAPH ANALYSIS!



Slide 4: Compare the Control/Untreated group and the C4T4 RIF with boosted Macrophages group. Discuss what changes have occurred.



Slide 5: How does adding the X and Y axis labels help process your thinking?



Slide 6: From the information given, can you develop a claim from the data? How does looking at a graph change your thinking about types of treatments for TB?

