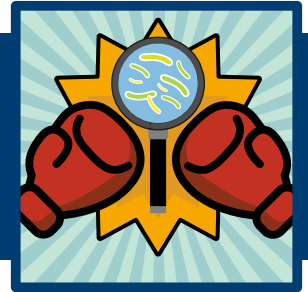


Processing Out

UNIT: TUBERCULOSIS

LESSON 3: ME VS. TB - BOOSTING THE IMMUNE SYSTEM TO DEFEAT AN ANCIENT ADVERSARY

ACTIVITY 3B: TEAM UP TO FIGHT TB!



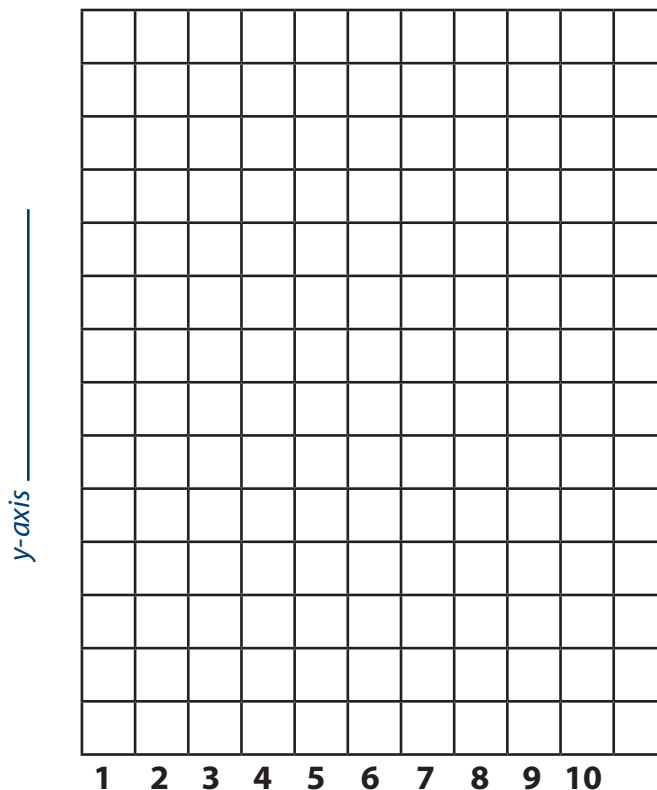
TEXAS BIOMEDICAL
RESEARCH INSTITUTE
HEALTH STARTS WITH SCIENCE

Now that you have identified careers and created a budget, you need to share your budget with at least 2 other HR team members (your classmates). There will be multiple options for the budget which is why it is important to compare and discuss your proposal with other members of your department. Compare your career choices with one another, discussing your rationale for selecting these careers. Remember, the TB research must include skilled personnel but remain within budget. After comparing and discussing budget proposals with the HR team (classmates), you may decide to adjust your proposal. Adjustments are common when creating budgets.



In the budget proposal, you need create a graph which shows only the careers you have selected. Include the graph title, label the X and Y axis, and create a legend identifying X axis numbers and color bars to a career.

Title _____



x-axis _____

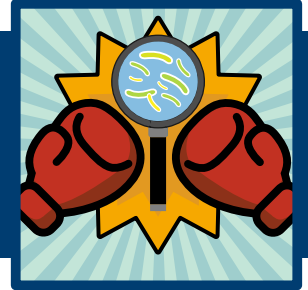
MIDDLE & HIGH SCHOOL LEVEL

Processing Out

UNIT: TUBERCULOSIS

LESSON 3: ME VS. TB - BOOSTING THE IMMUNE SYSTEM TO DEFEAT AN ANCIENT ADVERSARY

ACTIVITY 3B: TEAM UP TO FIGHT TB!



Writing a Budget Proposal: Use the following template to create your proposal. Keep in mind you have a limited budget of \$538,000/year to staff the TB research. There are other costs associated with the research, but you are only responsible for the personnel budget. You will need to provide a rationale for each of the career personnel in the proposal. Add or remove lines in the proposal as needed. Do not exceed the annual personnel budget.

| Personnel Budget Proposal: TB Research Project | | Date: |
|--|-----------|---------------|
| Proposal Organizer: | | Department: |
| Proposed Personnel | | |
| Career | Rationale | Annual Salary |
| | | |
| | | |
| | | |
| | | |
| | | |
| | | |
| | | |
| | | |
| | | |
| | | |
| | | |
| | | |
| | | |
| | | |
| | | |
| | | |
| | | |
| Total Proposed Personnel Budget | | |