

Student Directions

UNIT: CHIKUNGUNYA

LESSON 1: SILLY NAME, SERIOUS VIRUS

Activity 1A: *Of Mice or Men... and More*



**TEXAS BIOMEDICAL
RESEARCH INSTITUTE**
HEALTH STARTS WITH SCIENCE



Chikungunya virus (CHIKV) is a mosquito-borne virus that was initially found in Southeast Asia and Africa. The virus is spread when mosquitoes puncture the skin to feed on blood. Reactions to the bites include rash, fever, and severe arthritis. In this simulation, you will model how the immune system (specifically macrophages) reacts to CHIKV. You'll explore how different levels of viral replication can lead to different levels of immune responses in various species.

Materials:

- › Clear plastic cup
- › Writing utensil
- › Colored pencils
- › Highlighters (optional)

Directions:

1. Pick up an empty clear plastic cup.
2. Check the label or color on your cup.
3. Sit near someone with a different color or label than yours.
4. Time to join the outbreak! You're about to be infected- let's see what happens next!



Part A: Simulation observations: What I see..., What I think is going on..., What I wonder...

MIDDLE & HIGH SCHOOL LEVEL

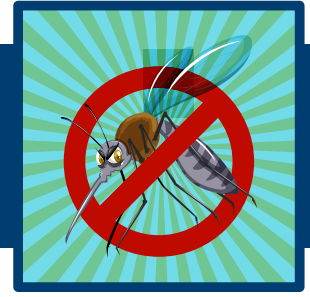
Teacher Enrichment Initiatives (TEI) | NIH SEPA | ©2025 | [TxBiomed.org](https://www.txbiomed.org)
NIH SEPA Project #1R25GM142021-01A1 | Some graphic elements courtesy of [Freepik](https://www.freepik.com)

Student Directions

UNIT: CHIKUNGUNYA

LESSON 1: SILLY NAME, SERIOUS VIRUS

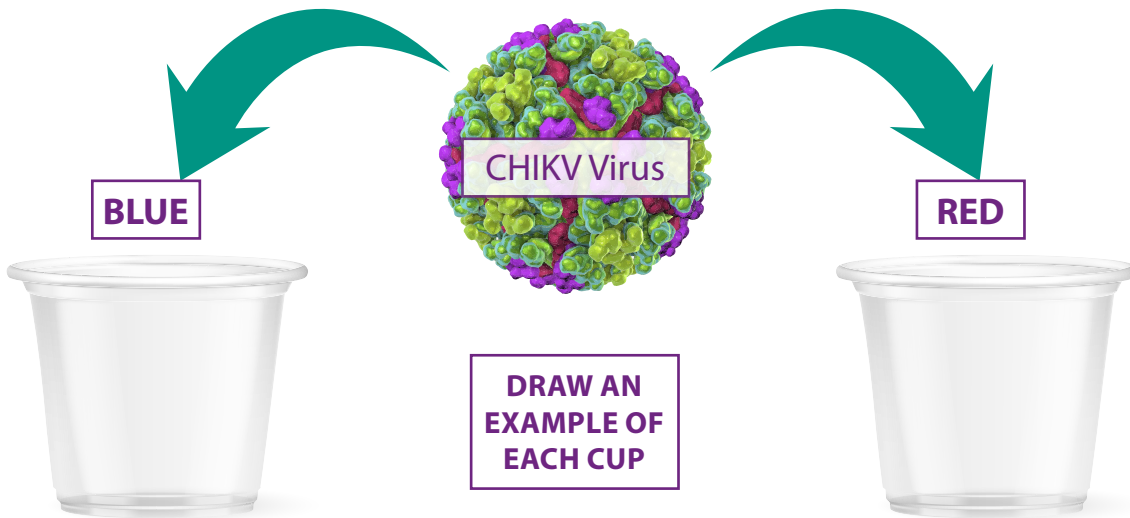
Activity 1A: Of Mice or Men... and More



PART B

Name: _____

CHIKV VIRUS GRAPHIC ORGANIZER



What do you observe?	
BLUE	RED
What do you think this means?	

MIDDLE & HIGH SCHOOL LEVEL

Teacher Enrichment Initiatives (TEI) | NIH SEPA | ©2025 | [TxBiomed.org](https://www.txbiomed.org)
NIH SEPA Project #1R25GM142021-01A1 | Some graphic elements courtesy of [Freepik](https://www.freepik.com)