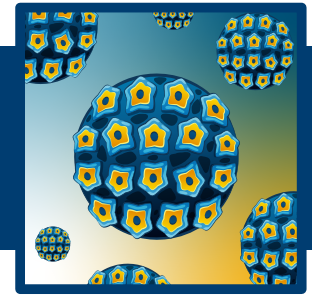


Student Processing Out

UNIT: GOING VIRAL! LESSON 1: SILENT SABOTAGE

Activity 1D: Informing the Community!



**TEXAS BIOMEDICAL
RESEARCH INSTITUTE**
HEALTH STARTS WITH SCIENCE

You work for the city's Health Department as a Communication Specialist. It is your job to translate complex information to benefit the community. Your latest assignment is to design a pamphlet to provide information to teenagers and their parents about HPV and its link to cancer. You will use a recent article, *Oncovirus Exposed: The HPV/Cancer Connection*, as the source of information for the pamphlet. The information in the pamphlet must be accurate, age-appropriate, and engaging. Good luck!



Rough Draft Rubric: To start you on the project, you must first design a rough draft. Your supervisor (teacher) has some things for you to consider including in your pamphlet. Before finalizing your pamphlet, you need to meet with your supervisor to address the items below:

MUST HAVES		MAY INCLUDE	
Teacher Checkmark	Descriptions	Teacher Checkmark	Descriptions
<input type="checkbox"/>	Overriding message or purpose.	<input type="checkbox"/>	Description of graphics that will be used.
<input type="checkbox"/>	Include the HPV genome.	<input type="checkbox"/>	Vaccine discussion.
<input type="checkbox"/>	Evidence to link HPV to cancer.	<input type="checkbox"/>	Address global implications
<input type="checkbox"/>	Identify target audience(s).	<input type="checkbox"/>	Quotes from doctors, scientists, or other professionals.
<input type="checkbox"/>	Cite credible sources.	<input type="checkbox"/>	
Feedback:			
Things to Consider when Designing Pamphlet			
Consider why someone would want to read the pamphlet.		Provide resources such as QR codes and links for fact checking.	

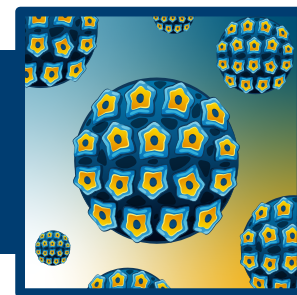
MIDDLE & HIGH SCHOOL LEVEL

Teacher Enrichment Initiatives (TEI) | NIH SEPA | ©2026 | TxBiomed.org
NIH SEPA Project #1R25GM142021-01A1 | Some graphic elements courtesy of [Freepik](https://www.freepik.com)

Student Processing Out

UNIT: GOING VIRAL! LESSON 1: SILENT SABOTAGE

Activity 1D: Informing the Community!



Pamphlet Rubric: Using your rough draft and any additional feedback provided by your supervisor, create your pamphlet. See the rubric below for additional information regarding necessary content. Remember that your job is to translate information from the article to educate teenagers and their parents about HPV and its link to cancer. Your supervisor will use the rubric to evaluate your pamphlet. Good luck! Your job depends on it!

CRITERIA	Excellent (4)	Proficient (3)	Developing (2)	Beginning (1)	Subtotals
Scientific Accuracy	Accurately explains the HPV16 genome with a deep understanding of how the evolution of oncogenes can cause cancer.	Accurately explains most key genes and links oncogenes to cancer.	Explains some genes, but the connections to cancer are vague or oversimplified.	Contains major errors or lacks understanding of the genome or cancer link.	
Clarity of Information	Explanations are exceptionally clear and appropriate for a teenage audience.	Explanations are mostly clear and suitable for a teenage audience.	Explanations are inconsistent in clarity or include confusing vocabulary.	The text is overly simplistic or too complex for a teenage audience.	
Effective Use of Visuals to Inform Targeted Audience	Excellent use of visuals to engage with and enhance understanding of targeted audience.	The visuals which were included were appropriate but less engaging for targeted audience.	Some visuals are used, but connections were not clear for targeted audience.	Limited or no use of visuals; no relevant connection to the topic for targeted audience.	
Subtotal Points					
Accurate Citations Included: <input type="checkbox"/> yes (2 pts) <input type="checkbox"/> no (0 points)					
Total Point					
Feedback:					

MIDDLE & HIGH SCHOOL LEVEL