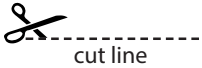
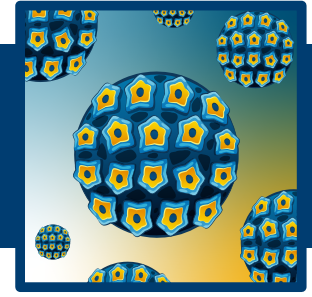


Processing Out: Community Options

UNIT: GOING VIRAL!

LESSON 2: PUBLIC HEALTH: IT'S A PROCESS!

Activity 2B: A Committee on a Mission



TEXAS BIOMEDICAL
RESEARCH INSTITUTE
HEALTH STARTS WITH SCIENCE

Rural Community

Population: 6,300

Average Household Income: \$42,700

Population Density per Square Mile: 23 people

Highest Level of Education (Majority): Some high school or high school diploma

Average age: 44

Miles from Nearest Major Hospital: 32 miles

Percent of population vaccinated against HPV: 30%



Urban Community

Population: 2 Million

Average Household Income: \$85,100

Population Density per Sq. Mile: 3,374 people

Highest Level of Education (Majority): Bachelor's Degree or Higher

Average Age: 35 years old

Miles from Nearest Major Hospital: 5 miles

Percent of population vaccinated against HPV: 65%



Suburban Community

Population: 32,276

Average Household Income: \$130,000

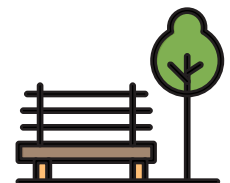
Population Density per Sq. Mile: 1,496 people

Highest Level of Education (Majority): Bachelor's Degree or Higher

Average Age: 36 years old

Miles from Nearest Major Hospital: 15 miles

Percent of population vaccinated against HPV: 75%



MIDDLE & HIGH SCHOOL LEVEL

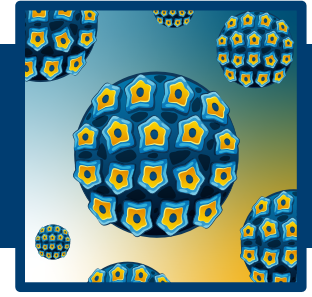
Teacher Enrichment Initiatives (TEI) | NIH SEPA | ©2026 | TxBiomed.org
NIH SEPA Project #1R25GM142021-01A1 | Some graphic elements courtesy of [Freepik](https://www.freepik.com)

Processing Out: Community Options

UNIT: GOING VIRAL!

LESSON 2: PUBLIC HEALTH: IT'S A PROCESS!

Activity 2B: A Committee on a Mission



College Campus Community

Population: 24,600 (including 13,000 enrolled students)

Average Household Income: \$52,300 (note: many residents are students or university employees)

Population Density per Sq. Mile: 4,100

Highest Level of Education (Majority): Bachelor's Degree or currently pursuing a degree

Average Age: 27 years old

Miles from Nearest Major Hospital: 1.2 miles

Percent of population vaccinated against HPV: 65%



Remote Village Community

Population: 350

Average Household Income: \$15,000

Population Density per Sq. Mile: 12 people

Highest Level of Education (Majority): some homeschooling

Average Age: 47 years old

Miles from Nearest Major Hospital: 75 miles

Percent of population vaccinated against HPV: 5%



Unhoused Community within a major city

Population: 2,800

Average Household Income: Less than \$10,000/year (majority have no steady income)

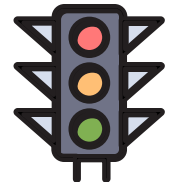
Population Density per Sq. Mile: Densely packed street encampments, shelters, and transitional housing over 0.4 square miles

Highest Level of Education (Majority): Some high school or high school diploma

Average Age: 43 years old

Miles from Nearest Major Hospital: 0.9 miles

Percent of population vaccinated against HPV: 12%



MIDDLE & HIGH SCHOOL LEVEL

Teacher Enrichment Initiatives (TEI) | NIH SEPA | ©2026 | TxBiomed.org
NIH SEPA Project #1R25GM142021-01A1 | Some graphic elements courtesy of [Freepik](https://www.freepik.com)