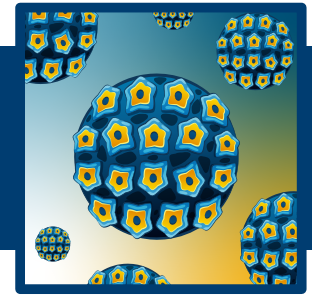


Student Processing Out

UNIT: GOING VIRAL!

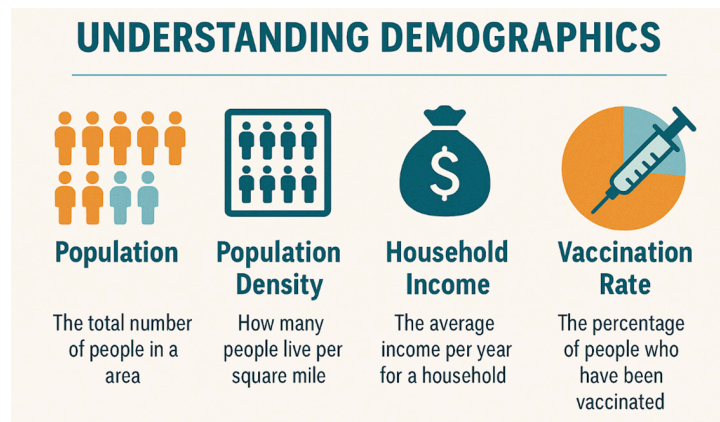
LESSON 2: PUBLIC HEALTH: IT'S A PROCESS!

Activity 2B: A Committee on a Mission



**TEXAS BIOMEDICAL
RESEARCH INSTITUTE**
HEALTH STARTS WITH SCIENCE

You are a member of a Public Health Committee focused on viral disease prevention and analysis of the risk of disease spread within your community. You recently read a peer-reviewed research on HPV16. Using information from this article your committee is to design an educational infographic or poster to educate your community to prevent and control outbreaks. Choose to create either an infographic or a public health announcement, whichever best fits your community. Students should consider the following:



Population Density per Sq. Mile: the number of people living within a one square mile area

Household Income: the amount of money a household makes per year

› Assess the Risk of HPV Spread

→ Consider: population density, vaccination rates, age, access to healthcare, and cultural norms.

› Develop a Community-Focused PSA Strategy

→ What tone/language will you use?

› Identify Key Talking Points

→ What do they need to know about HPV?

→ How is it transmitted? What are the long-term risks? (e.g., cancer)

→ Why is prevention important?

› Make Recommendations to Limit Spread

→ Vaccination (who, where, how?)

→ Safe practices (education, resources, reducing stigma)

→ Possible Containment Policies (mandated vaccination, mobile clinics, etc.)

MIDDLE & HIGH SCHOOL LEVEL

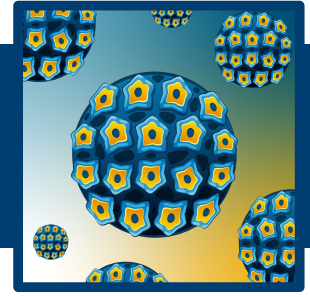
Teacher Enrichment Initiatives (TEI) | NIH SEPA | ©2026 | [TxBiomed.org](https://www.txbiomed.org)
NIH SEPA Project #1R25GM142021-01A1 | Some graphic elements courtesy of [Freepik](https://www.freepik.com)

Student Processing Out

UNIT: GOING VIRAL!

LESSON 2: PUBLIC HEALTH: IT'S A PROCESS!

Activity 2B: A Committee on a Mission



Committee Members:

Assigned Community:

Infographic or poster?

Population:

Average Household Income:

Population Density per Square Mile:

Highest Level of Education (Majority):

Average age:

Miles from Nearest Major Hospital:

Percent of population vaccinated against HPV:

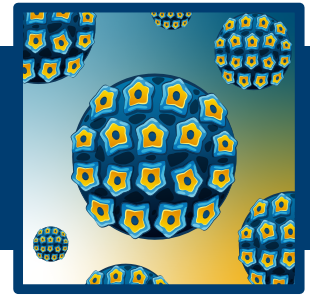
Infographic Public Health Announcement

Student Processing Out

UNIT: GOING VIRAL!

LESSON 2: PUBLIC HEALTH: IT'S A PROCESS!

Activity 2B: A Committee on a Mission



Committee Discussion Notes

A large, empty rectangular area with a purple wavy border, intended for students to take notes during a committee discussion.

Outline of Committee Plan

A large, empty rectangular area with a purple wavy border, intended for students to outline their committee plan.

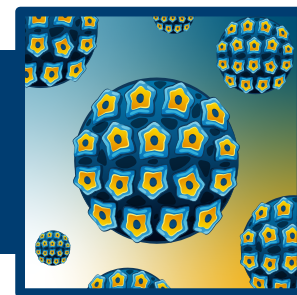
MIDDLE & HIGH SCHOOL LEVEL

Student Processing Out

UNIT: GOING VIRAL!

LESSON 2: PUBLIC HEALTH: IT'S A PROCESS!

Activity 2B: A Committee on a Mission



CRITERIA	Excellent (4)	Proficient (3)	Developing (2)	Beginning (1)	Subtotals
Accuracy of Viral Cycle	Accurately includes all major steps from entry to potential carcinogenesis in the viral cycle.	Minor inaccuracies and/or missing one stage of the viral cycle.	Missing two or more stages of the viral cycle and/or unclear progression of viral cycle.	Viral cycle missing multiple steps or not correctly presented.	
Community Risk Assessment	Insightful analysis of the target community using multiple demographic factors (e.g., access, culture, vaccination rates).	General analysis includes only 2 demographic factors but uses these factors effectively.	Limited or surface-level assessment of community risk.	Risk assessment is vague or missing.	
Communication Strategy	Creative, culturally relevant, and clearly tailored to the target audience; medium, tone, and language are highly effective.	Medium and tone are appropriate for targeted audience and somewhat creatively address cultural relevance.	Communication strategy may be questionable to effectively address the needs of the targeted audience.	Communication strategy is not appropriate for targeted audiences' location or population composition.	
Scientific Explanation	Provides multiple approaches including data to promote understanding of scientific concepts using accurate terms and concise explanations.	Provides several approaches with some data. Accurate scientific terms are used with some explanations.	Relies on one or two approaches which include minimal or no data. The scientific terms used lack sufficient explanation for targeted audience.	Incorrect usage or lack of scientific terms. No data provided and no clear approach to effectively inform targeted audience.	
Recommendations & Policy Ideas	Proposes actionable, community-specific recommendations and policies (e.g., vaccination programs, education outreach and funding).	Includes at least one realistic recommendation and/or policy idea (e.g., vaccination programs, education outreach or funding).	General or vague policy suggestions which lack specificity for implementation for the community.	Recommendations are not realistic for the community.	
Visual Design and Clarity	Infographic is clear, legible, well-organized, visually appealing, and free of grammar/spelling mistakes.	Mostly clear; minor organization issues, little to no grammar/spelling errors.	Lacks clarity or organization; design makes accessing information difficult, contains many grammar/spelling errors.	Confusing or difficult to interpret, illegible with many mistakes.	

MIDDLE & HIGH SCHOOL LEVEL

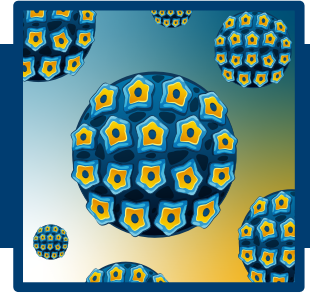
Teacher Enrichment Initiatives (TEI) | NIH SEPA | ©2025 | [TxBiomed.org](https://www.txbiomed.org)
 NIH SEPA Project #1R25GM142021-01A1 | Some graphic elements courtesy of [Freepik](https://www.freepik.com)

Student Processing Out

UNIT: GOING VIRAL!

LESSON 2: PUBLIC HEALTH: IT'S A PROCESS!

Activity 2B: A Committee on a Mission



CRITERIA	Excellent (4)	Proficient (3)	Developing (2)	Beginning (1)	Subtotals
Total Point					
Infographic/Poster Presentation Feedback:					